

# Beadalon®

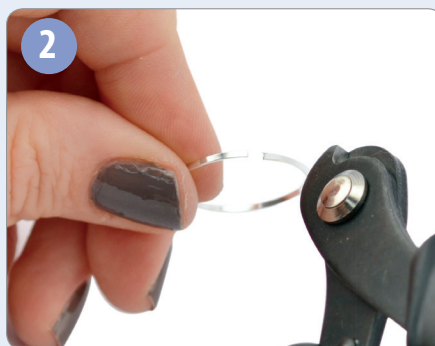
## Flat Memory Wire Findings

(Round, Oval, Rectangle)

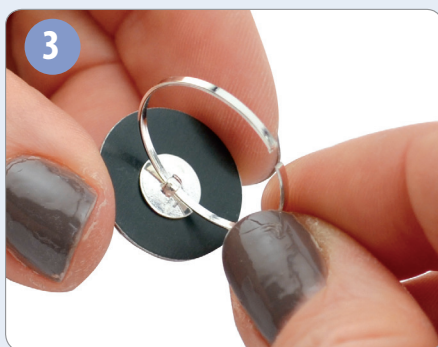
### ATTACHING FLAT MEMORY WIRE FINDINGS



1 Place the focal component face-down on a flat surface and place a small drop of epoxy on the back of the focal. Press the slider component onto the glue. Let it dry.



2 Use Memory Wire Shears to cut a single loop off the ring-size coil of Memory Wire so there is a gap of about 1/8" between the ends.



3 Slide the focal component onto the center of the wire.



4 Glue a Flat Memory Wire End Cap to each end of the wire.

